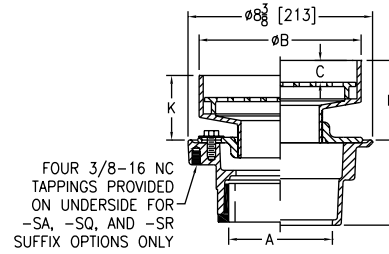


Z415 BODY ASSEMBLY WITH "TYPE I" STRAINER



ENGINEERING SPECIFICATION

Zurn ZN415I floor and shower drain features Dura-Coated cast iron body with bottom outlet, combination invertible membrane clamp and adjustable collar with seepage slots, and "TYPE I" polished, nickel bronze strainer with raised flange.



Strainer Designation	Dimensions in inches [mm]							Str. Open Area sq in [cm ²]	Approximate Weight lb [kg]
	A Pipe Size	B Diameter	C	K		K'			
				Min.	Max.	Min.	Max.		
-5I	2 [51], 3 [76]	5-7/16 [138]	7/8 [22]	1-9/16 [40]	2-5/8 [67]	2-1/8 [54]	3-3/8 [86]	8 [52]	14 [6]
-7I	2 [51], 3 [76], 4 [102]	7-3/8 [187]	1 [25]	2-9/16 [65]	3-3/8 [86]	2-7/8 [73]	4-1/8 [104]	13 [84]	19 [9]
-9I	3 [76], 4 [102]	9 [229]	1/2 [13]	2-3/16 [56]	3-1/8 [79]	2-5/8 [67]	3-7/8 [98]	23 [148]	23 [10]
	6 [152]								

PREFIXES	DESCRIPTION	STRAINER DESIG.	PIPE SIZE	LIST PRICE
ZN415*	D.C.C.I. Body Assembly with Polished Nickel Bronze Top	-5I	2", 3"	1,036.00
		-7I	2", 3", 4"	1,116.00
		-9I	3", 4"	1,564.00
			6"	2,108.00
ZB415	D.C.C.I. Body Assembly with Polished Bronze Top	-5I	2", 3"	973.00
		-7I	2", 3", 4"	1,023.00
		-9I	3", 4"	1,430.00
			6"	1,976.00
Z415	D.C.C.I. Body Assembly ONLY (add "-L/Top" to product sku)	No Strainer	2", 3"	194.00
			2", 3", 4"	194.00
			3", 4"	194.00
			6"	739.00

OUTLETS (SPECIFY PIPE SIZE IN INCHES AND TYPE OF OUTLET)				
OUTLET TYPE	PIPE SIZE/ OUTLET TYPE	E BODY HT. DIM.	ADD	
IC	Inside Caulk	2IC, 3IC, 4IC	4-13/16"	N/C
IP	Threaded	2IP	2-7/16"	80.00
		3IP	2-3/4"	80.00
		4IP	2-13/16"	80.00
		6IP	2-7/8"	80.00
NH	No-Hub	2NH, 3NH, 4NH	3-13/16"	N/C
NL	Neo-Loc	2NL, 3NL, 4NL	3-7/8"	N/C

SUFFIXES	ADD
-AR	Acid Resisting Epoxy Coated Cast Iron 171.00
-G	Galvanized Cast Iron 198.00
-P	Trap Primer Connection (1/2") N/C
Ⓢ -SA	Stabilizer Assembly (See Z1035) 138.00
Ⓢ -SQ	Stabilizer Q-deck (See Z1035-Q) 184.00
Ⓢ -SR	Stabilizer Ring (See Z400-SR) 121.00
Ⓢ -TC	Neo-Loc Test Cap Gasket (2", 3", 4" NL Bottom Outlet Only) 24.00
-TS	Top Secured with Slotted Screws 58.00
-TSP	Trap Seal Protection Device (Size Matches Drain Outlet Selected, See Z1072) POA
-U	1"-3" High Extension Adapter (See Z400-U) D.C. 140.00
	Galv. 306.00
	For each additional 1" above 3" 98.00
-V	Backwater Valve (Not Available with -Y) 380.00
-VP	Vandal-Proof Secured Top 117.00
-Y	Sediment Bucket (Not Available with -V) 109.00
-90	90° Threaded Side Outlet Body Assembly (2" and 3" Only) 219.00
BEST SELLERS LIST PRICE	
ZN415-2NH-5I	1,036.00
ZN415-2NH-7I	1,116.00
ZN415-2NL-7I	1,116.00
ZN415-3NH-7I	1,116.00
ZN415-3NL-7I-P	1,116.00

Supplied By:



877-903-7246

www.commercialplumbingsupply.com